

# Illuminated Light Pockets Innovative Displays



delivering  
branded  
environments™



# Ultra bright V5

## Suspended Light Pockets™

**LED Light Pockets™ have been designed with a tremendous amount of attention to detail.**

**All acrylic has been finished to a very high standard and has no sharp edges.**

**Only ultra bright cool white LED's have been used as these give the best colour rendering.**

We have developed an extensive range of different designs to enhance the appearance of different property types.

Kits are supplied with 4 metres of cable, panel clamps, isolators, transformers and LED Light Pockets™

If you are not using our professional Installation service, which is available on a national basis, please make sure that there is enough electrical power for the display.

Single or Multi pockets.

- Units have a 20mm silver border (standard), or this can be printed to match your corporate identity.

- Available in sizes A5 - A0, to meet your requirements.

Maintenance free with lamp life of up to 60,000 hours.

LED Light Pockets™ are highly energy efficient and use very low levels of electricity.



# Ultra bright V5

## Double-Sided Suspended Light Pockets™

**A5 Pocket (Landscape)**



**Single Pocket LA5LD-1-V5**  
Overall size 293x220mm  
to fit cable centres 302mm

**Kits available**

Number of Pockets	Reference
1	KLA5LD-1-V5
2	KLA5LD-2-V5
3	KLA5LD-3-V5
4	KLA5LD-4-V5

**A4 Pocket (Landscape)**



**Single Pocket LA4LD-1-V5**  
Overall size 380x293mm  
to fit cable centres 389mm

**Kits available**

Number of Pockets	Reference
1	KLA4LD-1-V5
2	KLA4LD-2-V5
3	KLA4LD-3-V5
4	KLA4LD-4-V5

**A3 Pocket (Landscape)**




**Single Pocket LA3LD-1-V5**  
Overall size 503x380mm  
to fit cable centres 512mm

**Kits available**

Number of Pockets	Reference
1	KLA3LD-1-V5
2	KLA3LD-2-V5
3	KLA3LD-3-V5
4	KLA3LD-4-V5

**A5 Pocket (Portrait)**



**Single Pocket LA5PD-1-V5**  
Overall size 220x293mm  
to fit cable centres 232mm

**Kits available**

Number of Pockets	Reference
1	KLA5PD-1-V5
2	KLA5PD-2-V5
3	KLA5PD-3-V5
4	KLA5PD-4-V5

**A4 Pocket (Portrait)**



**Single Pocket LA4PD-1-V5**  
Overall size 293x380mm  
to fit cable centres 302mm

**Kits available**

Number of Pockets	Reference
1	KLA4PD-1-V5
2	KLA4PD-2-V5
3	KLA4PD-3-V5
4	KLA4PD-4-V5

**A3 Pocket (Portrait)**



**Single Pocket LA3PD-1-V5**  
Overall size 380x503mm  
to fit cable centres 389mm

**Kits available**

Number of Pockets	Reference
1	KLA3PD-1-V5
2	KLA3PD-2-V5
3	KLA3PD-3-V5
4	KLA3PD-4-V5

# Ultra bright V5

## Double-Sided Suspended Light Pockets™

A2 Pocket (Landscape)



Single Pocket LA2LD-1-V5

Overall size 676x503mm  
to fit cable centres 685mm

Kits available

Number of Pockets	Reference
1	KLA2LD-1-V5
2	KLA2LD-2-V5
3	KLA2LD-3-V5
4	KLA2LD-4-V5

A1 Pocket (Landscape)



Single Pocket LA1LD-1-V5

Overall size 924x677mm  
to fit cable centres 933mm

Kits available

Number of Pockets	Reference
1	KLA1LD-1-V5
2	KLA1LD-2-V5
3	KLA1LD-3-V5
4	KLA1LD-4-V5

A2 Pocket (Portrait)



Single Pocket LA2PD-1-V5

Overall size 503x676mm  
to fit cable centres 512mm

Kits available

Number of Pockets	Reference
1	KLA2PD-1-V5
2	KLA2PD-2-V5
3	KLA2PD-3-V5
4	KLA2PD-4-V5

A1 Pocket (Portrait)



Single Pocket LA1PD-1-V5

Overall size 677x924mm  
to fit cable centres 686mm

Kits available

Number of Pockets	Reference
1	KLA1PD-1-V5
2	KLA1PD-2-V5
3	KLA1PD-3-V5
4	KLA1PD-4-V5

A0 Pocket (Portrait)



Single Pocket LA0PD-1-V5

Overall size 924x1272mm  
to fit cable centres 933mm

Kits available

Number of Pockets	Reference
1	KLA0PD-1-V5
2	KLA0PD-2-V5
3	KLA0PD-3-V5
4	KLA0PD-4-V5

# Ultra bright V5

## Double-Sided Suspended Light Pockets™

A4 Pocket (Portrait), 2 Poster Width



Single Pocket LA4P2W-V5

Overall size 503x380mm  
to fit cable centres 512mm

Kits available

Number of Pockets	Reference
1	KLA4P2W-V5
2	KLA4P2W-V5
3	KLA4P2W-V5
4	KLA4P2W-V5

A4 Pocket (Portrait), 3 Poster Width



Single Pocket LA4P3W-V5

Overall size 730x380mm  
to fit cable centres 739mm

Kits available

Number of Pockets	Reference
1	KLA4P3W-V5
2	KLA4P3W-V5
3	KLA4P3W-V5
4	KLA4P3W-V5



# Ultra bright V5

## Wall mounted LED Light Pockets™

Designed as a slim line magnetic open style frame to compliment the suspended Double-Sided Light Pockets™.

The frames are mounted 20mm from the wall and create a glowing edge that creates intrigue and draws attention to the eye from a distance.

Manufactured with ultra-bright LED lighting – uses a fraction of the electricity of standard light boxes.

- Even spread of light – no dark shadows appear ensuring that your graphic is crisp and punchy.

- Maintenance free – lamp life is between 50-60,000 hours. No need to change lamps or tubes, saving time and money.

Easily mounted with a hook on angled bracket.

Available in sizes A4 to A0.



# Ultra bright V5

## Wall mounted LED Light Pockets™

A4 Pocket (Landscape)



Single Pocket KLA4LD-V5-WMH

Overall size 380x293mm

A3 Pocket (Landscape)



Single Pocket KLA3LD-V5-WMH

Overall size 503x380mm

A2 Pocket (Landscape)



Single Pocket KLA2LD-V5-WMH

Overall size 676x503mm

A4 Pocket (Portrait)



Single Pocket KLA4PD-V5-WMH

Overall size 293x380mm

A3 Pocket (Portrait)



Single Pocket KLA3PD-V5-WMH

Overall size 380x503mm

A2 Pocket (Portrait)



Single Pocket KLA2PD-V5-WMH

Overall size 503x676mm

A1 Pocket (Landscape)



Single Pocket KLA1LD-V5-WMH

Overall size 924x677mm

A0 Pocket (Landscape)



Single Pocket KLA0LD-V5-WMH

Overall size 1272x924mm

A1 Pocket (Portrait)



Single Pocket KLA1PD-V5-WMH

Overall size 677x924mm

A0 Pocket (Portrait)



Single Pocket KLA0PD-V5-WMH

Overall size 924x1272mm

# Coloured

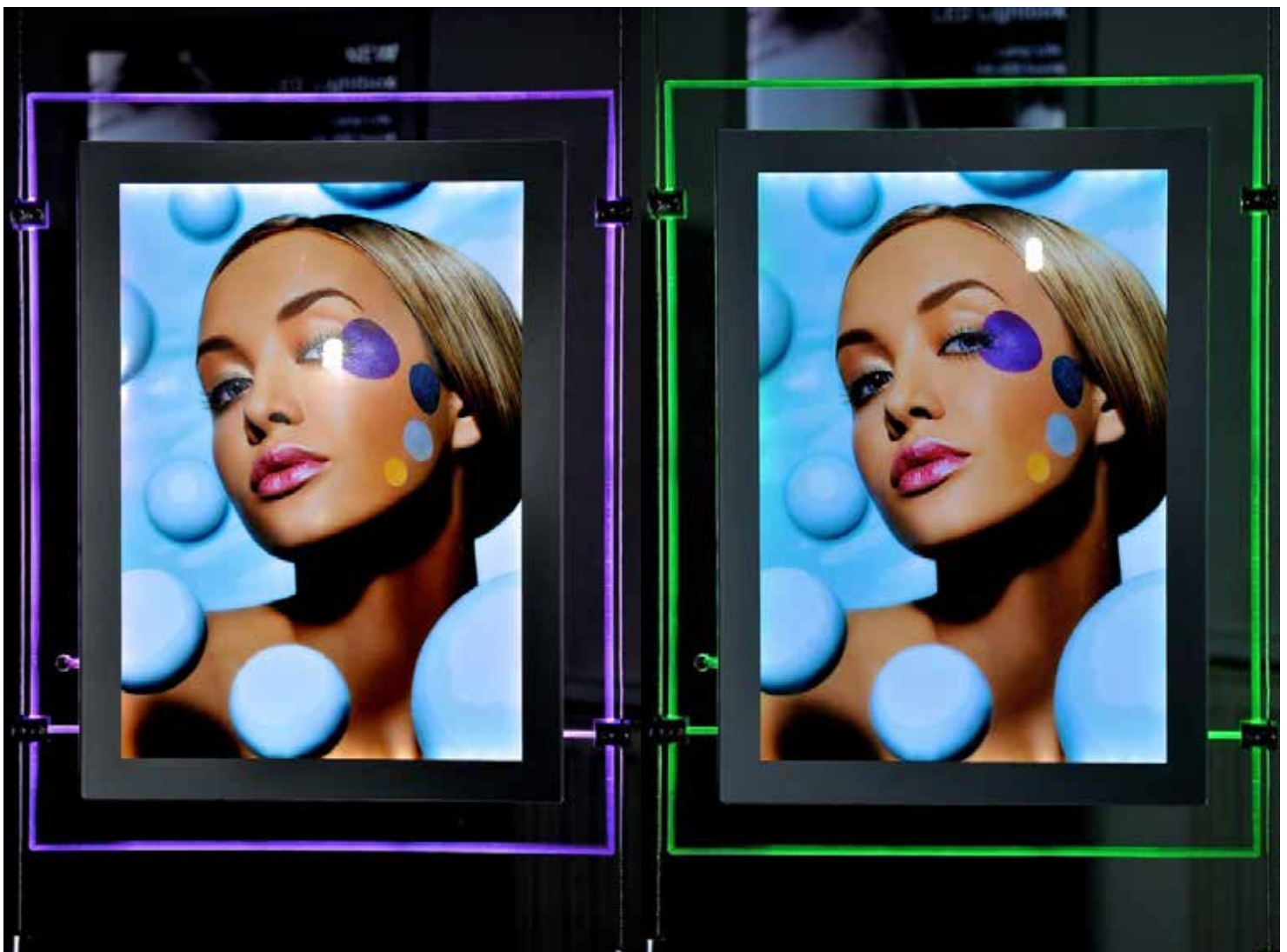
## Double-sided LED Light Pockets™

**11 vibrant colours to choose from to create a glowing edge around the perimeter of the Light Pocket™. With a touch of a button cycle through the available colours.**

Double sided and available in sizes A4 to A1.

Even spread of light – no dark shadows appear ensuring that your graphic appears crisp and eye catching.

Maintenance free – lamp life is between 50-60,000 hours. No need to change lamps or tubes, saving time and money.





# Coloured

## Double-sided LED Light Pockets™

A4 Pocket (Landscape)



Single Pocket LA4LD-1-V5-CC

Overall size 380x293mm  
to fit cable centres 389mm

Kits available

Number of Pockets	Reference
1	KLA4LD-1-V5-CC
2	KLA4LD-2-V5-CC
3	KLA4LD-3-V5-CC
4	KLA4LD-4-V5-CC

A3 Pocket (Landscape)



Single Pocket LA3LD-1-V5-CC

Overall size 503x380mm  
to fit cable centres 512mm

Kits available

Number of Pockets	Reference
1	KLA3LD-1-V5-CC
2	KLA3LD-2-V5-CC
3	KLA3LD-3-V5-CC
4	KLA3LD-4-V5-CC

A2 Pocket (Landscape)



Single Pocket LA2LD-1-V5-CC

Overall size 676x503mm  
to fit cable centres 685mm

Kits available

Number of Pockets	Reference
1	KLA2LD-1-V5-CC
2	KLA2LD-2-V5-CC
3	KLA2LD-3-V5-CC
4	KLA2LD-4-V5-CC

A4 Pocket (Portrait)



Single Pocket LA4PD-1-V5-CC

Overall size 293x380mm  
to fit cable centres 302mm

Kits available

Number of Pockets	Reference
1	KLA4PD-1-V5-CC
2	KLA4PD-2-V5-CC
3	KLA4PD-3-V5-CC
4	KLA4PD-4-V5-CC

A3 Pocket (Portrait)



Single Pocket LA3PD-1-V5-CC

Overall size 380x503mm  
to fit cable centres 389mm

Kits available

Number of Pockets	Reference
1	KLA3PD-1-V5-CC
2	KLA3PD-2-V5-CC
3	KLA3PD-3-V5-CC
4	KLA3PD-4-V5-CC

A2 Pocket (Portrait)



Single Pocket LA2PD-1-V5-CC

Overall size 503x676mm  
to fit cable centres 512mm

Kits available

Number of Pockets	Reference
1	KLA2PD-1-V5-CC
2	KLA2PD-2-V5-CC
3	KLA2PD-3-V5-CC
4	KLA2PD-4-V5-CC

# Coloured

## Double-sided LED Light Pockets™

A1 Pocket (Landscape)



Single Pocket LA1LD-1-V5-CC

Overall size 915x666mm  
to fit cable centres 927mm

Kits available

Number of Pockets	Reference
1	KLA1LD-1-V5-CC
2	KLA1LD-2-V5-CC
3	KLA1LD-3-V5-CC
4	KLA1LD-4-V5-CC

A1 Pocket (Portrait)



Single Pocket LA1PD-1-V5-CC

Overall size 666x915mm  
to fit cable centres 678mm

Kits available

Number of Pockets	Reference
1	KLA1PD-1-V5-CC
2	KLA1PD-2-V5-CC
3	KLA1PD-3-V5-CC
4	KLA1PD-4-V5-CC

# Alternative fixings

## Microtrack

In addition to the conventional way of fixing Light Pockets™, standard cable and rod fixings, Microtrack makes installation easier.

Microtrack has been designed to make the installation of Light Pockets™ easier and reduce the number of transformers required. Microtrack conductive aluminium profiles are fitted to the ceiling which means you only need one transformer for several displays. Use cables or rods from the track.

Microtrack	
Length	Reference
1m	KMT-1
1.5m	KMT-1.5
2m	KMT-2
3m	KMT-3
Tracks are supplied with ceiling fixings, power connectors and transformers.	



Cables  
suspended  
from Microtrack

3mm rods  
suspended  
from Microtrack



# Alternative fixings

## 3mm Suspended Rods

**Exciting new way to stand out from the crowd.**

**Elegant 3mm rods are suspended from the ceiling. You can then suspend the Light Pockets™ to create an interesting, eye catching design.**

This style is ideal for small traditional windows where you do not want to fix to a window cill. The floor is left free for you to position a low level display.

Single suspended panels can be used as logo panels, and look extremely effective.

All power will need to be taken from ceiling level.

Top fixing can be wall mounted or ceiling fixed.

The top fixing is hinged so that it can easily be moved, to allow access for window cleaners if fitted close to the window.



# Freestanding Window Displays

**The Free-standing version is a cost-efficient method of displaying illuminated posters in windows or interiors if fixing to ceilings, floors or walls creates an issue.**

The “New” Fairfield freestanding unit is designed with flexibility in mind. The unit is designed to utilise the Wall Mounted Ultra bright LED Light Pockets™ which creates a superb halo illumination around the pocket. The pocket is then mounted to a bespoke fabricated back panel.

The options for finish on the back panel range from Acrylic, Solid Wood, Laminated MDF to a bespoke printed graphic / logo.

Combinations available to suit A2, A3 and A4 Light Pockets™.



# Guidelines

## For Electricians

LED Light Pockets™ can be connected to 13 amp sockets or to an electrical spur.

Before installation, check the total amps required.

E.g. A display that consists of 3nr A4 Pockets and will be supplied with a power pack with a 2 amp loading allowance. In a single window, you may have 4 of these units, which means you would need to allow for 3 power packs each with a 3 pin plug.

### Electrical supply required:

Please note that when multiple displays are installed, you will need to allow for up to 80-100 amp in-rush current for up to 100µs.

We therefore recommend that a C or D type anti-surge breaker is used in the fuse board when groups of supplies are switched on manually or automatically by a time-clock.

Order custom made power supply holders designed to hold two power supplies with integrated sockets.

It is the electrician's responsibility to ensure that suitable provisions are provided when units are switched on, that everything works perfectly.

### We do not recommend connecting to the lighting circuits.

### Guidelines to clean pockets.

Do not use any solvents as this will damage pockets. Just use a damp cloth to clean off dust or a professional acrylic cleaner.

## What paper to use

You have a choice of material which you can use in your LED Light Pockets™. Select from professional prints or create your own in-house. Before purchasing any paper for your printer, double check if you have a laser or ink-jet printer.

### Laser Printer

The majority of our clients use this option.

This is a truly economical solution to achieve good results - without going to the cost of using duratran prints.

As the paper is extremely smooth and very white, you will get a good bright image, which works well. It will be as bright as a duratran print during the day, but at night you have to look closely to see the difference.

120gsm Colortech+Gloss coated is a two-sided paper with an ultra smooth surface, giving guaranteed performance on digital laser colour copies.

The high gloss finish and bright white colour gives an enhanced image and sharpness.



### Never tear

This is a plastic type material that we have sourced especially for the Light Pockets™.

It will give you the closest results to a professional duratran print.

We recommend that you order a few sample sheets to check the paper works with your printer.

### Professional Lite Film® prints

Lite Film® will always give the best results and are used when a truly professional result is required.

We provide a 48 hour service. You will need to supply high resolution PDF files to the exact size. Additional charges will be made for creating any alterations to the PDF.

We have sourced top quality Lite Film® at highly competitive prices.

Contact us and we can arrange for a sample to be sent to you.

Colortech	
Size	Reference
A4	CTGA4-500
A3	CTGA3-500
Pack of 500 sheets	

Never tear	
Size	Reference
A4	PNTA4-100
A3	PNTA3-100
Pack of 100 sheets	

Lite Film®	
Size	Reference
A4	INKA4-50
A3	INKA3-50
Pack of 50 sheets	



How can we help you?  
Get in touch today

[www.futurama.ltd.uk](http://www.futurama.ltd.uk)

+44 (0) 238 073 2179

[futuramadisplays@futurama.ltd.uk](mailto:futuramadisplays@futurama.ltd.uk)

delivering  
branded  
environments™

futurama